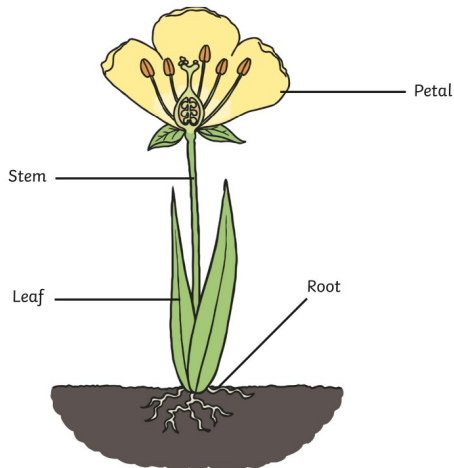


# Plants - Science Y3

**Plant** - A living thing that grows in the earth and has roots, leaves and a stem e.g. grass, trees, bushes, flowering plants.

**Botanist** - A scientist who studies plants.



**Root** - The part of a plant that acts as an anchor, fixing the plant into the ground. Roots absorb water to help the plant grow.

**Stem** - The part of the plant that grows above the ground from which the leaves and flowers grow. The stem is used to transport water around the plant.

**Leaves** - A plant's leaves absorb sunlight and turn it into energy that the plant uses to grow.

**Flowers** - The part of the plant that bears the seed.

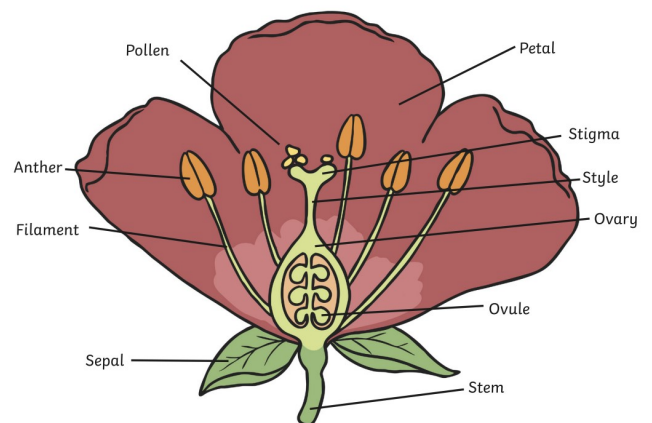
**Absorb** - To take in or soak up.

**Nutrients** - Chemicals that are required for life and growth.

**Pollination** - The transfer of pollen from one part of a plant to another.

**Animal pollination** - Animals can transfer pollen from one plant to another.

**Wind pollination** - The wind can blow pollen from one plant to another.



**Dispersal** - Spreading things out over an area, seeds do this so that they can reproduce.

**Gravity** - Seeds drop from the plant onto the ground.

**Animal dispersal** - Seeds can be carried on animals' fur, be eaten and pass through animals or be carried away by them.

**Wind dispersal** - Seeds can be carried by the wind or they can be shaken from the plant by the wind.



many flowers rely on animals to help with pollination by moving pollen from one flower to another

poppy seeds are dispersed from a 'pepper pot' head, when the wind blows the seeds shake out