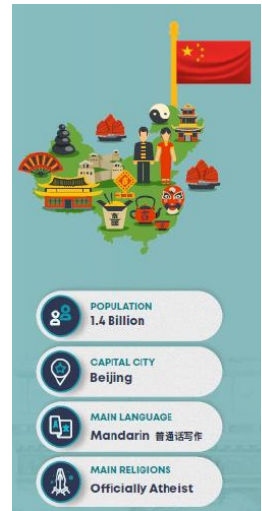


# Asia - India and China - Geography Y3



**India** - A country in southern Asia with the second largest population in the world.



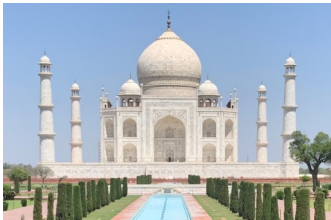
**China** - A country in the east of Asia with the largest population in the world.



**Indus River** - One of the longest rivers in Asia. It travels through China, India and Pakistan.



**Great Wall of China** - A defensive wall built through China to protect it from invaders.



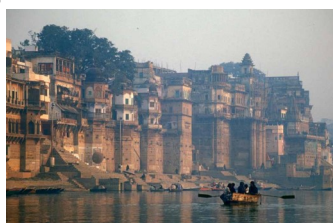
**Taj Mahal** - A famous monument in India built by Shah Jahan in 1653 as a tomb for his wife.

**Indus Valley Civilisation** - An ancient civilisation that flourished in the Indus River valley from about 2500 to 1500 BC.

**Qin Shi Huangdi** - The First Emperor of China who began the construction of the Great Wall.



**Yellow River** - The second longest river in China and the sixth longest in the world.



**Ganges River** - A sacred river in the Hindu religion that runs through the north-east of India.



**Terracotta Army** - More than 8000 life sized statues of soldiers that are part of the burial tomb built for the first emperor of China.



**Yangtze River** - The longest river in Asia and the third longest river in the world.