

# Still Life and Form - Art Y3

**Still Life** - A picture of something that does not move.

**Form** - The 3D shapes in art where the artist creates the illusion that an object is 3D rather than flat.



Still Life with Peaches and a Glass - from Herculaneum (50 CE) .



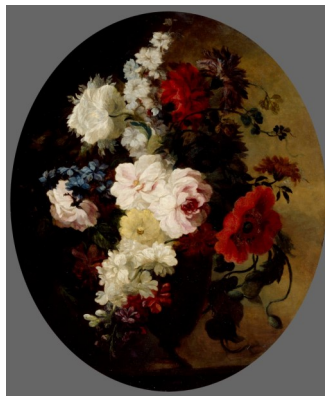
Campbell's Soup I by Andy Warhol (1968).



Still Life, Pitcher and Fruit by Paul Cezanne (1894).



Still Life with a Beer Mug by Fernand Leger (1921-1922).



Summer by Mary Moser (c.1780).



Whistlejacket by George Stubbs (1762).

**Tone** - How dark or light something is. Tones are created by the way that light falls on an object.

**Shade/Shadow** - The parts of an object that are darker.

**Highlight** - The parts of an object where the light is strongest or lightest.

**Mid-tone** - Tones between the highlights and shadows.

**Cast Shadow** - Where an object makes a shadow on something else underneath it e.g. a table.

**Cross Hatching** - A technique of creating tone by drawing lines which cross over each other.

**Tints** - A mixture of a colour with white, which increases lightness.

**Shades** - A mixture of a colour with black, which increases darkness.



Still Life with Five Objects by Giorgio Morandi (1956).